



## Installing your sign with standoffs - No template

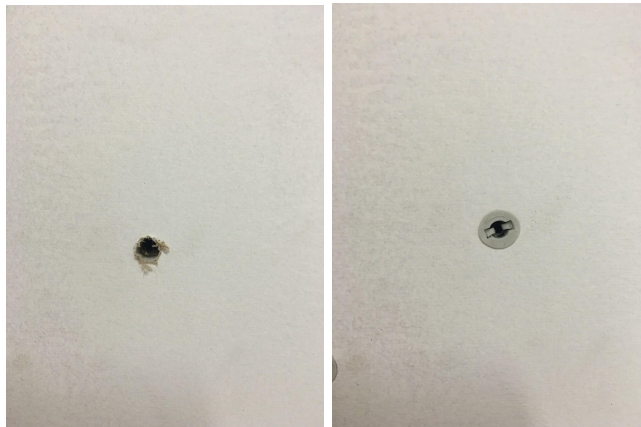
### **Tools Needed:**

- 1) Drill
- 2) 1/16" drill bit (or similar for drilling a pilot hole)
- 3) 1/4" drill bit (for drilling wall to insert wall anchors)
- 4) Level
- 5) Hammer (for inserting the wall anchors)
- 6) Phillips head screwdriver
- 7) Standoffs, screws, wall anchors (**provided**)
- 8) Allen wrench to tighten standoffs

### ***Installation***

Step 1 - Hold your sign up on the wall, making sure it's level. Mark the holes to be drilled out.

Step 2 - Drill out the holes you just marked with a 1/4" drill bit, and insert the wall anchors.



Step 3 - Insert a screw through the female side of the standoffs.

Step 4 - Using a drill with a phillips head, screw the screw with the standoff into the wall anchor.  
Repeat for all of the mounting points.

Step 5 - Place your sign overtop of the standoffs, and screw the male part of the standoff into the female part.

Step 6 - Using an allen wrench, tighten the screw on the side of the standoff.

**For more information you can check this Youtube video of how to install the standoffs:**  
**<https://www.youtube.com/watch?v=1abrB69kZ9c>**