



Installing your sign - Interior - French Cleat & Individual Pieces (6-32)

Tools Needed:

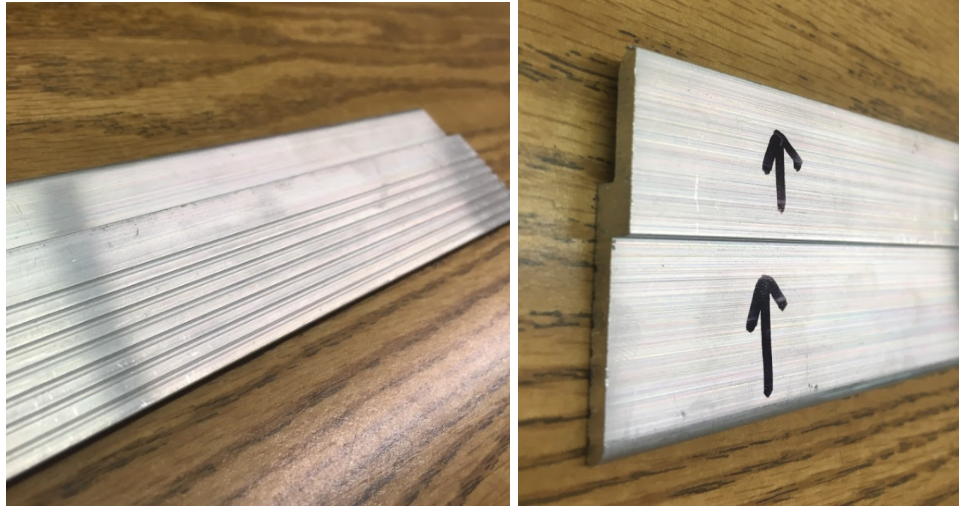
- 1) Drill
- 2) 1/16" drill bit (or similar for drilling a pilot hole)
- 3) 1/4" drill bit (for drywall anchors)
- 4) Level
- 5) Hammer (for inserting the drywall anchors)
- 6) Pliers (for twisting in the pieces of all thread, as well as for removing drywall anchors if they break or bend while being inserted)
- 7) Painters Tape
- 8) All thread, spacers, drywall anchors (provided)

Install steps:

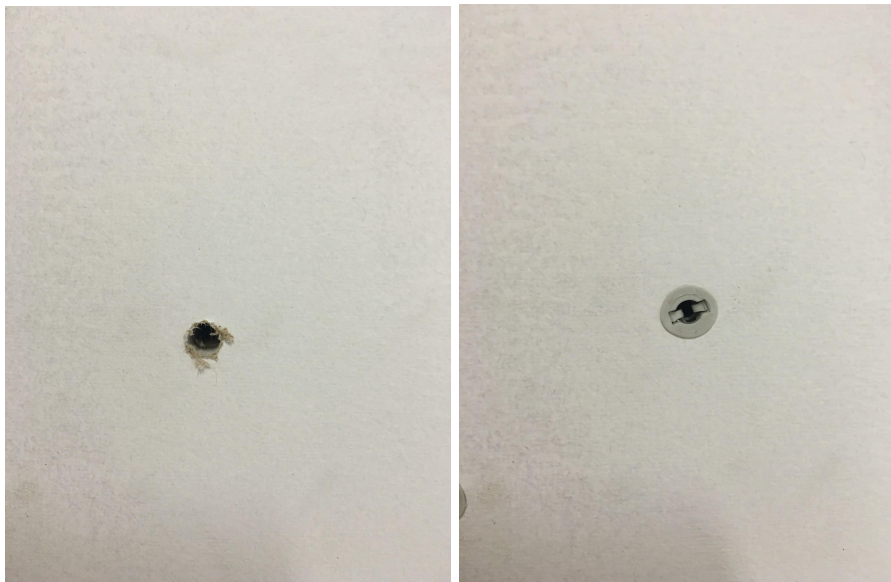
- 1) Install the 6-32 all thread onto the back of the pieces
- 2) Put the spacers onto the all thread
- 3) Hang the template, make sure it is level
- 4) Place cleat where specified, mark holes for anchors
- 5) Drill all the necessary pilot holes, drill out holes using specified drill bit size
- 6) Hang the part with the French Cleat first
- 7) Then press in the individual pieces

How to install a French Cleat

- 1) Place the french cleat on the wall, with the ribbed side on the wall, the lip facing up



- 2) Make sure the french cleat is level. **Make sure the bottom of the french cleat is on the line marked on the template.**
- 3) With a pencil, mark the template through the holes on the cleat. Mark the furthest left, right and middle hole. We typically recommend one hole every 16 inches. .
- 4) Remove the cleat, and drill a pilot hole with a 1/16" drill bit through your marks.
- 5) Drill each of the holes again but with a 1/4" drill bit.
- 6) Insert the drywall anchors into each of the holes.



- 7) Place the provided french cleats on the wall and screw them into place, into the drywall anchors.
- 8) Now carefully hook the french cleat that is on the back of your sign into the french cleat that is on the wall.



How to install Individual Pieces

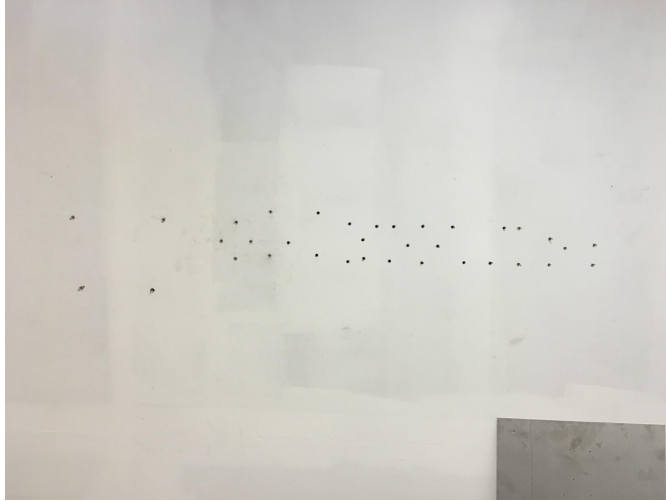
Step 1 - Take a look at your provided template.



Step 2 - Hang the template on the wall. Make sure it is level.



Step 3 - Drill pilot holes through all of the areas indicated on the template, after drilling pilot holes, remove the template and drill $\frac{1}{8}$ " or $\frac{9}{64}$ " holes for the all thread.



Step 4 - Insert pieces with 6-32 all thread on the back, with spacers, into the drywall, press them into place. Sometimes you have to lightly tap on the face of the pieces to get the 6-32 all thread to fit into the drywall.