



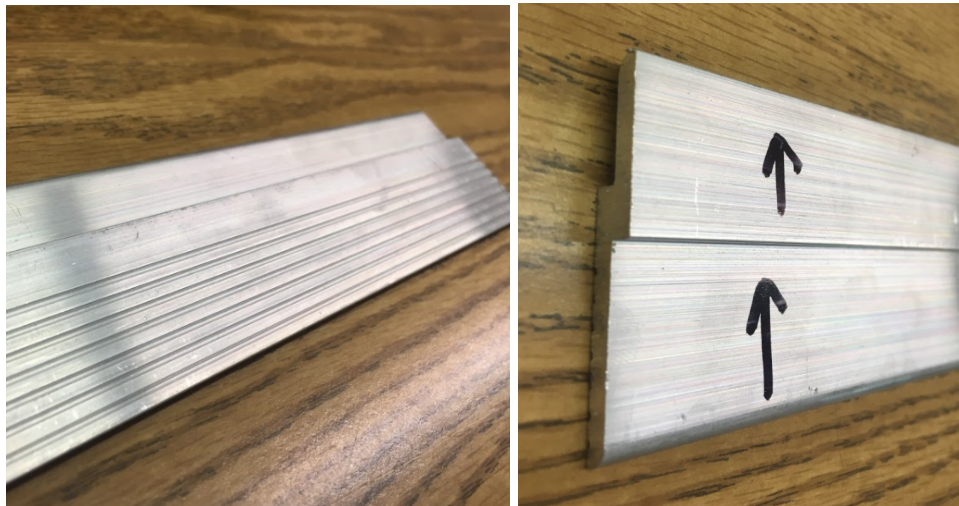
Installing your sign - French Cleat - Toggle Bolts (3/16")

Tools Needed:

- 1) Level
- 2) Drill
- 3) 1/2" size bit
- 4) Phillips head screwdriver
- 5) 3/16" Toggle Bolts (provided)

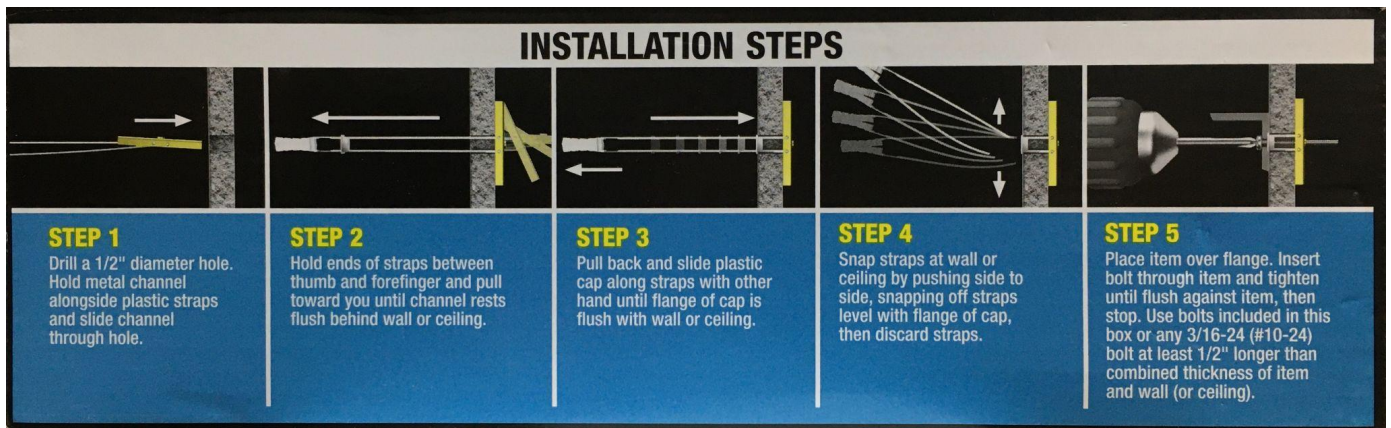
Instructions

- 1) Place the french cleat on the wall, with the ribbed side on the wall, the lip facing up



- 2) Make sure the french cleat is level
- 3) With a pencil, mark the wall through the holes on the cleat. Mark the furthest left, right & middle hole. We typically recommend one hole every 16 inches. You can drill through the french cleat if you need another hole in a different location.
- 4) Remove the cleat, & drill a pilot hole through your marks on the wall.
- 5) Drill each of the holes again but with a 1/2" size bit.

- 6) Place the provided french cleat on the wall & bolt them into place with the Toggle Bolts.
a) Toggle Bolt Installation shown here:



- 7) Now carefully hook the french cleat that is on the back of your sign into the french cleat that is on the wall.



- 8) **There may be** tabs on the bottom of your sign for you to add additional Toggle Bolts for extra security, if so drill & insert the Toggle Bolts here as well.